

# REACH-IN Dual temp



Fan cooling



Digital



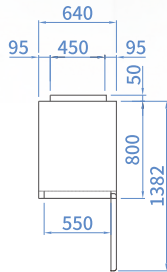
LED lamp

\* Standard - Wire Shelving Type

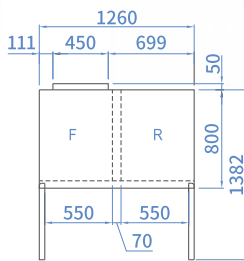
SRFT25-2

SRFT45-2

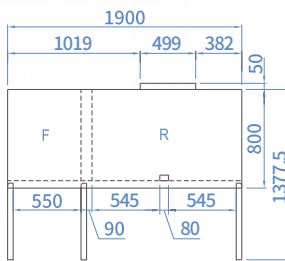
SRFT65-3



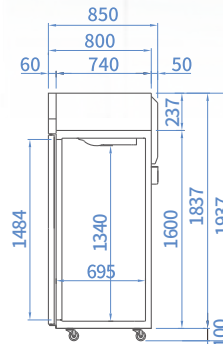
SRFT25-2



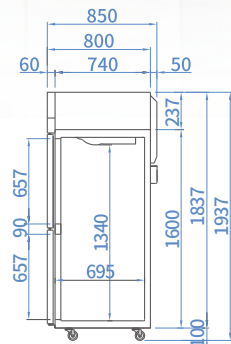
SRFT45-2



SRFT65-3



SIDE VIEW  
(Full Door)



SIDE VIEW  
(Half Door)

MODEL	SRFT25-2	SRFT45-2	SRFT65-3
Classification	Refrigerator + Freezer		
Cabinet Dimension (WxDxH mm)	640 x 850 x 1937	1260 x 850 x 1937	1900 x 850 x 1937
Capacity (ℓ)	R:254 / F:254	R:507 / F:507	R:1124 / F:562
Inner Temperature (°C)	R:-2~ 8 / F: -21 ~ -12		
Ambient Temperature (°C)	R: 40 / F: 38		
Refrigerant	R-404a	R-134a / R-404a	R-134a / R-404a
Insulation Type	Polyurethane / Cyclopentane + CFC Free		
Amps (A)	3.5	4.5	5.5
Voltage (V/Hz/Ph)	240 / 50 / 1		
Weight (Kg)	85	152	177
Power (W)	653	732	1098
Number of Doors	2	2	3
Compressor (HP)	1/2	1/3	1/3
Number of Shelves	1	3	6
Power Plug	10A		

GLASS DOOR MERCHANDISER

REACH-IN

UNDER COUNTER

BAR EQUIPMENT

ICE MAKER

DISPLAY CASE

SPECIAL MODEL

BAKING LINE