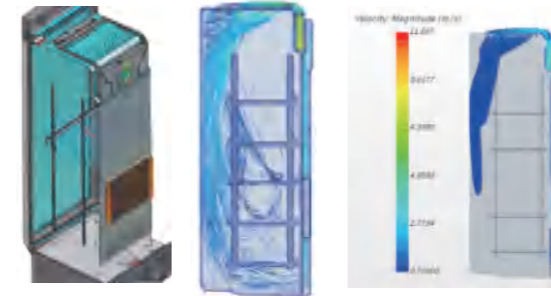


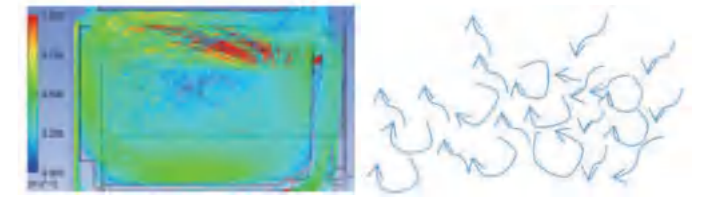
Discover Vacc-Safe Top Cooling Technology

2~8°C Pharmacy Refrigerator



Top cooling system

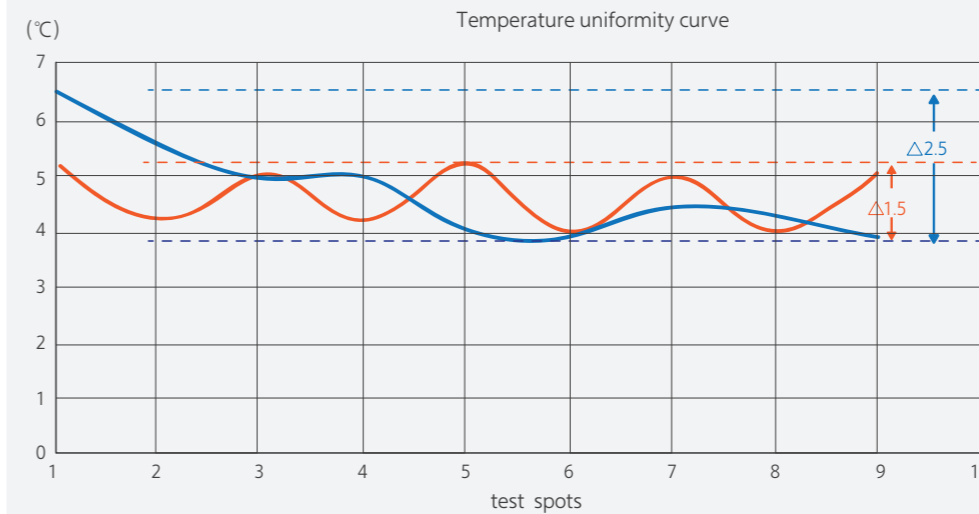
Strong cooling airflow from the top to the bottom, works as an air curtain to block the external hot air from entering the refrigerator when door is opening, so as to prevent the temperature in the cabinet from rising rapidly, also contributes better temperature uniformity performance.



Traditional cooling system

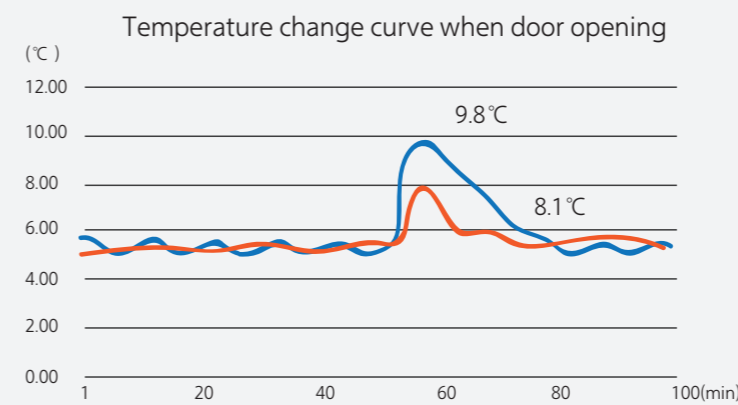
Air flow with disorderly directions, unsatisfied temperature uniformity performance.

Advantages

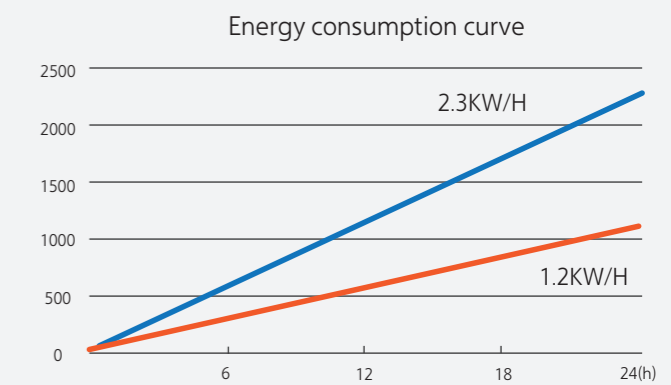


— Normal refrigerator
— Vacc-Safe Top cooling refrigerator

Improves temperature uniformity performance by 40%.
Max interior temperature difference $\pm 1^\circ\text{C}$
Better protection for temperature sensitive medicines and samples.



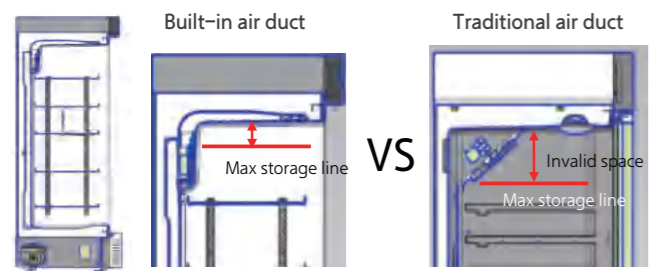
Prevent temperature rising rapidly when door is opening
Temperature rise much slower than normal pharmacy refrigerator.



Energy saving
Energy consumption 47% lower than similar sized normal pharmacy refrigerator.

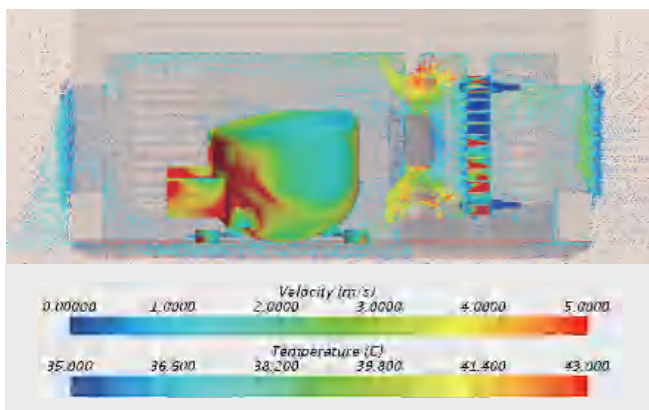
Vacc-Safe Advanced Technologies

Built-in air duct



Increase the effective interior space by 10%
Less interior space occupancy.
Built-in air duct plus the Top cooling design, ensure temperature in the top of chamber is cool enough for storage.

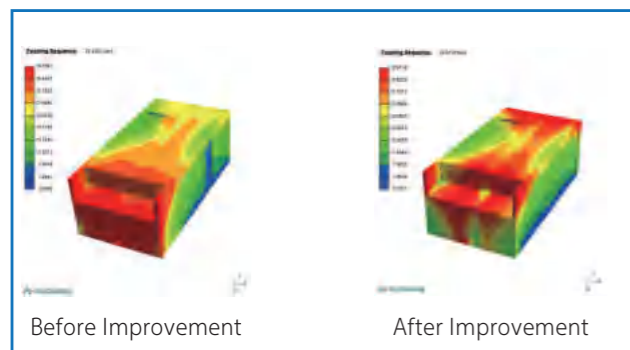
Micro-channel condenser



Powerful heat dissipation for condenser, heat exchange capacity increase by more than 20% than common copper tube fin condenser.
Excellent compressor overheating protection, effectively improve the service life of core parts.

LBA Forming Technology

The world's leading fourth generation foaming agent



Better insulation, more energy-saving.
More reasonable foaming layer design, higher space utilization rate.

Vacc-Safe Advanced Technologies

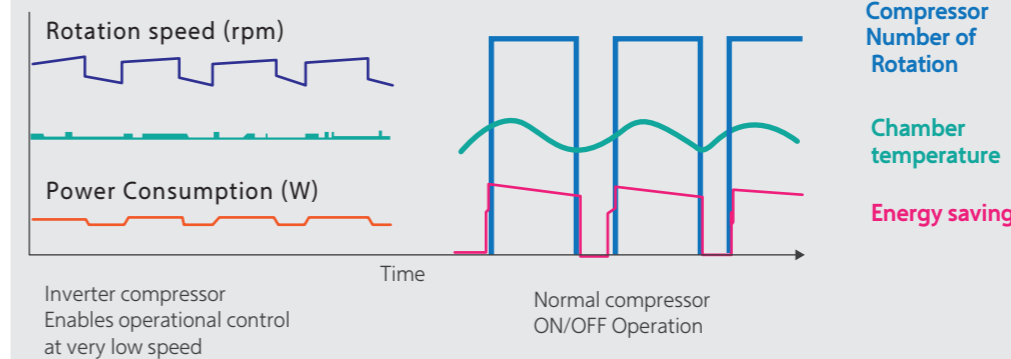
DC Turbo Fan



Item	Turbo	Traditional
Wind pressure	High	Low
Wind speed	High	Low
Rotate speed	Low	High
Noise	Low	High
Efficiency	High	Low
	Invisible	Exposed
Safety	DC	AC

Decrease noise level by 8%
Integrated DC Turbo Fan works with smaller vibration and higher efficiency.
Safer for daily use
No strong electric component in chamber, safer & more reliable.

Inverter Compressor



Improve cooling performance.
Reduce energy consumption by 15%.
Decrease noise level.
20% higher quick-cooling ability.
Interior temperature variation within 2°C.

Product features



High-precision Temperature Control

- Microcomputer temperature control, temperature accuracy 0.1°C
- Digital display, adjustable temperature range 2°C~8°C.
Temperature variation ≤ 2°C



Refrigeration System

- International famous compressor, energy saving, rapid cooling;
- Top cooling;
- DC Turbo Fan;
- Built-in air duct;
- LBA Forming Technology;
- Micro-channel condenser – High-efficiency, Compressor overheating protection;
- Patented D+ heat exchange technology, high efficiency and energy saving .



Security System

- Perfect audible & visual alarm systems: High and low temperature alarm, power failure, sensor failure alarm, door open alarm etc.
- The alarm temperature can be set as required;
- Built-in battery , continuously showing the real-time chamber temperature after power off;
- Safety lock.



Humanized Design

- Electric heating glass door design, effectively preventing condensation;
- Test hole-Monitor real-time temperature in chamber Multi-layer shelves design, removable and with label card;
- Adjustable LED light;
- Built-in USB data logger, all data can be traced and printed;
- Printer optional;
- Wide voltage range design for unstable power supply areas.

2~8°C Pharmacy Refrigerator

Scope of Application

Vacc-Safe pharmacy refrigerators, suitable to store vaccines, medicines and laboratory products at 2°C to 8°C temperature range in pharmacies, pharmaceutical factories, hospitals, CDC, clinics, laboratories.

Product Advantages:

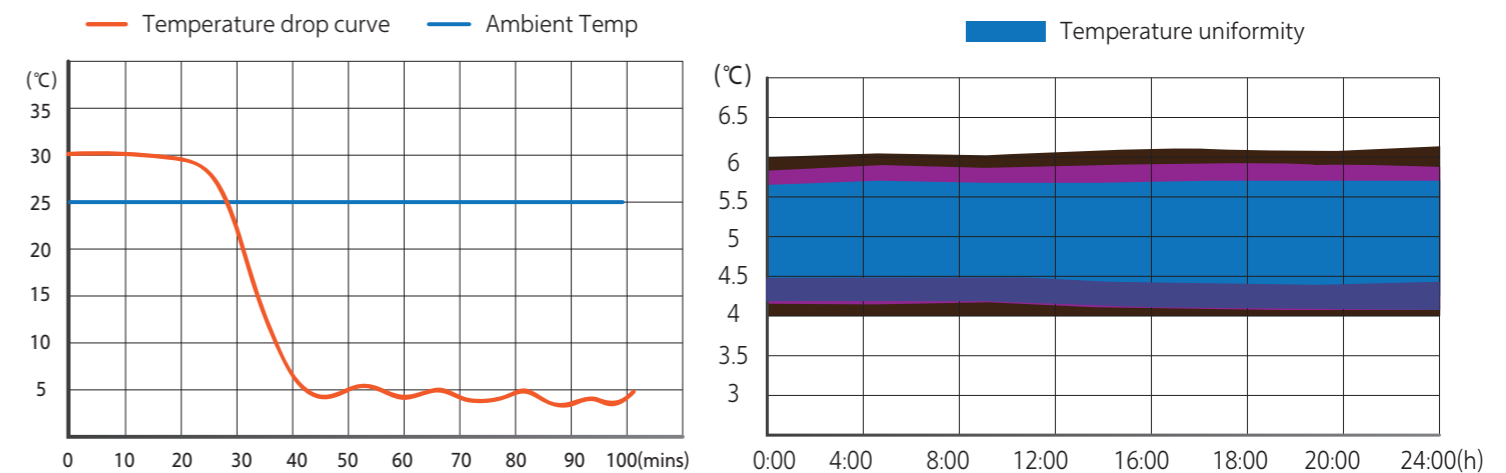
Leading technologies for Safer storage and Higher temperature stability.



2~8°C Pharmacy Refrigerator



Typical Performance Characteristics at 25°C Ambient



Standard 2~8°C Pharmacy Refrigerator

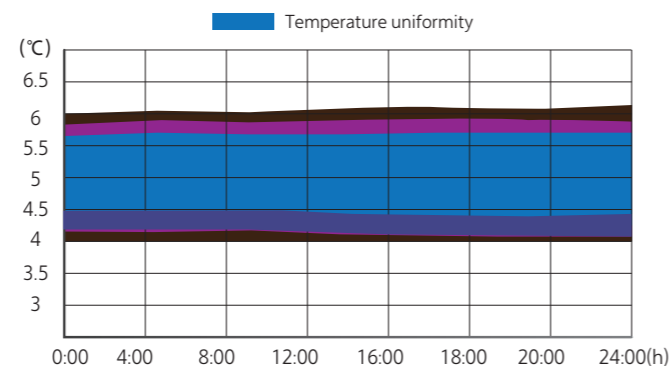
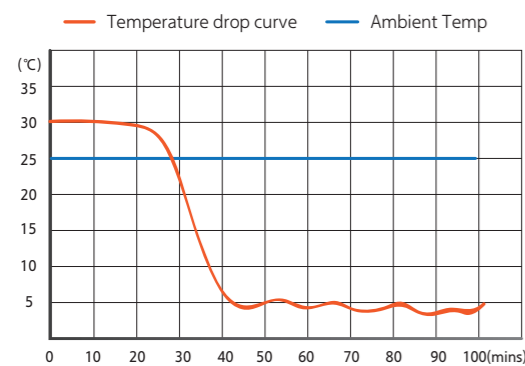
Scope of Application

Vacc-Safe pharmacy refrigerators, suitable to store vaccines, medicines and laboratory products at 2°C to 8°C temperature range in pharmacies, pharmaceutical factories, hospitals, CDC, clinics, laboratories.



VS50

Typical Performance Characteristics at 25°C Ambient



Standard 2~8°C Pharmacy Refrigerator



VS50



VS150

Key features

Safety & Temperature stability

- Microcomputer control, temperature accuracy 0.1°C;
- Digital display, adjustable temperature ranges 2°C~8°C; temperature variation $\leq 2^\circ\text{C}$;
- USB port, temperature data traceable;
- Perfect audible & visual alarm systems: High and low temperature alarm, power failure, sensor failure alarm, door open alarm etc. The alarm temperature can be set as required;
- Built-in battery, continuously showing the real-time chamber temperature after power off;
- Safety lock, door self-lock;
- Wide Voltage range design for unstable power supply areas.



Refrigeration System








- International famous compressor, energy saving, rapid cooling;
- High Efficient air flow design;
- DC Turbo Fan, High efficiency and energy saving, low noise and long service life;
- LBA Forming Technology, better insulation, more energy-saving, higher space utilization rate;
- Micro-channel condenser-High-efficiency, Compressor overheating protection;
- Patented D+ heat exchange technology, high efficiency and energy saving;
- CFC free, environment friendly.



Humanized Design

- Low-E glass door, effectively preventing condensation;
- Multi-layer shelves design, removable and with label card;
- Adjustable LED light;
- Printer optional.



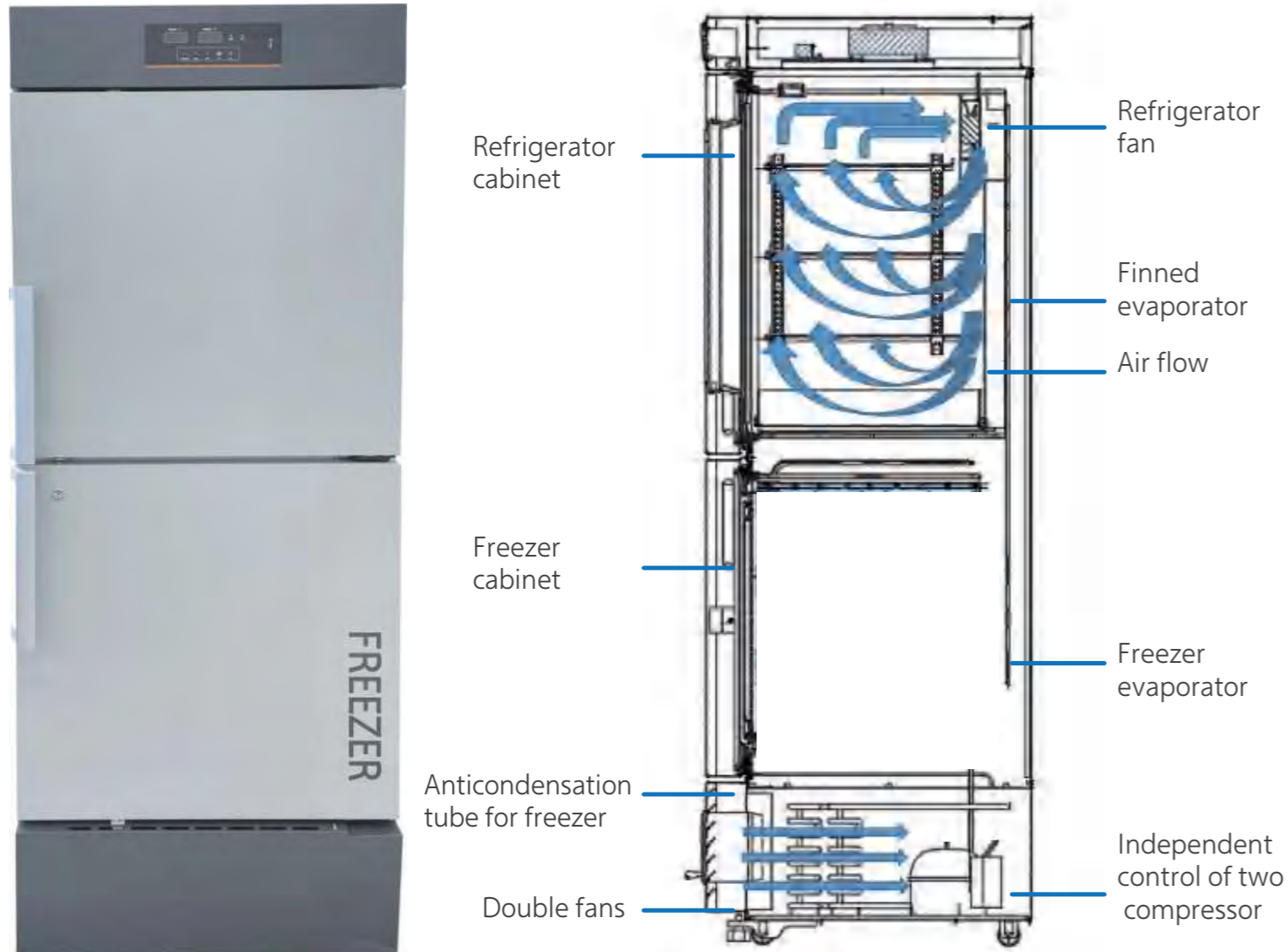
	Product Image							
	Series	Standard	Standard	2nd Generation	2nd Generation	2nd Generation	2nd Generation	2nd Generation
Item	Model No.	VS50	VS150	VS350	VS350P	VS420P	VS750P	VS1006P
Dimensions	Load capacity (40HQ)	380	153	71	71	47	38	21
	Fridge Storage Volume(L)	42	146	310	316	416	756	1006
	Product Dimensions(mm)(wxdxh)	480*450*550	595*615*810	595*603*1920	595*603*1920	690*653*1920	970*808*1920	1220*808*1920
	Interior Dimensions(mm)(wxdxh)	400*345*380	505*467*620	500*464*1343	500*464*1343	595*514*1343	880*634*1354	1130*634*1354
	Net/Gross Weight	25/29	43/48	78/90	78/90	88/100	140/170	220/260
Technical data	Cooling Type	Forced air cooling	Forced air cooling	Forced air cooling	Forced air cooling	Forced air cooling	Forced air cooling	Forced air cooling
	Defrost type	No frost	No frost	No frost	No frost	No frost	No frost	No frost
	Climate Class	N	N	N	N	N	N	N
	Refrigerant/Amount(g)	R600a/18g	R600a/26g	R600/36g	R600/36g	R600/36g	R600a/48g	R600a/60g
	Compressor type	Fixed frequency	Fixed frequency	Fixed frequency	Fixed frequency	Inverter	Inverter	Inverter
	Sensor Qty	2	2	3	6	6	6	6
Product Performance	Temperature Range	2 ~ 8°C	2 ~ 8°C	2 ~ 8°C	2 ~ 8°C	2 ~ 8°C	2 ~ 8°C	2 ~ 8°C
	Temperature uniformity/°C	3.5	+/-1	2	2	2	3	3
	Temperature volatility/°C	3	2	2	2	2	2	2
	Temperature Accuracy	0.1	0.1	0.1	0.1	0.1	0.1	0.1
Control	Controller	Microprocessor	Microprocessor	Microprocessor	Microprocessor	Microprocessor	Microprocessor	Microprocessor
	Display	LED	LED	LED	LED(Temperature &Humidity)	LED(Temperature &Humidity)	LED(Temperature &Humidity)	LED(Temperature &Humidity)
Electrical data	Rated Current(A)	0.75	0.75	1.5	1.5	1.5	1.8	2.1
	Rated Power(W)	65	70	190	190	260	320	350
Alarms	Power Failure Alarm	Y	Y	Y	Y	Y	Y	Y
	Sensor Failure Alarm	Y	Y	Y	Y	Y	Y	Y
	Environment Temperature Alarm	Y	N	Y	Y	Y	Y	Y
	Door ajar Alarm	Y	Y	Y	Y	Y	Y	Y
	High Temperature Alarm	Y	Y	Y	Y	Y	Y	Y
	Low Temperature Alarm	Y	Y	Y	Y	Y	Y	Y
	Remote Alarm	Optional	Y	Optional	Optional	Optional	Optional	Optional
Accessorie	Shelves/Drawers Qty	1/1	3	5	5	5	10	10
	Anti-condensation Door	LOW-E glass	LOW-E glass	Electrical heating	Electrical heating	Electrical heating	Electrical heating	Electrical heating
	Self-lock	N	Y	Y	Y	Y	Y	Y
	Label Card Holder	Optional	Optional	Y	Y	Y	Y	Y
	Cable Port	N	1	Y	Y	Y	Y	Y
	Castors/type	N	N	4/Omni-directional	4/Omni-directional	4/Omni-directional	4/Omni-directional	4/Omni-directional
	USB	Y	Y	N	Y	Y	Y	Y
	RS-485 Port	Y	N	N	Y	Y	Y	Y
	Printer	Optional	Optional	Optional	Optional	Optional	Optional	Optional
	Backup Battery	Y	Y	N	Y	Y	Y	Y
Backup Battery endurance	24h	24h	/	24h	24h	24h	24h	

Combined Refrigerator and Freezer

Scope of Application

Refrigerator and freezer compartments have independently cooling systems, and can be controlled individually. Perfectly meet the needs of multi-temperature storage. Suitable for hospitals, university laboratories, scientific research institutes, electronic industry, chemical industry, military industry.

Cooling system



VSC350P

Combined Refrigerator and Freezer



Dual Temperature Control System

- Refrigerator and freezer that can be individually controlled;
- Temperature of refrigerator is 2~8°C, freezer can adjust from -10~-25°C/-20~-40°C.
- Microcomputer control with LED display, temperature accuracy 0.1°C;
- World famous brand compressor, energy saving, environmental protection, high efficiency and low noise.



Security system

- Perfect alarm systems: buzzer alarming with light flashing;
- High and low temperature alarm, power failure, sensor failure alarm.



Humanized Design

- Stainless steel shelf, easy to clean;
- Food-grade stainless steel cabinet, corrosion-resistant;
- Fixed caster + universal wheel;
- Safety lock.



Model No.		VSC350P	
		Refrigerator	Freezer
Technical Data	Climate Class	N	
	Protection Against Electric Shock	I	
	Temperature Range	2°C~8°C	-25°C~-10°C
	Refrigerant/Amount(g)	R600a/28g	R600a/35g
	Cooling Type	Forced air cooling	Direct cooling
	Cabinet Material	PCM	
	Material of Door Seal	PCM	
	External Material	Spraying plate	
	Shelves material	Wire	glass
	Shelves	3	3
	Cable Port	1	1
	Light	1	/
	Compressor quantity(Total)	2	
	Foaming agent	cyclopentane	
Total Storage Volume(L)	206L	144L	
Electrical Data	Input power(Total)	160w	
	Power consumption(Total)	1.2 kwh/24h	
Dimensions	Gross weight(Total)	105kg/93kg	
	Product Dimensions(mm)(wxhx)(Total)	695*655*1920mm	
Functions	Sound Alarm	Y	
	Light Alarm	Y	
	Power Failure Alarm	Y	
	Sensor Failure Alarm	Y	
	Door open Alarm	Y	
	High Temperature Alarm	Y	
	Low Temperature Alarm	Y	
	Backup Battery	Y	
	USB	Y	