

Bringing the worlds best chillers to Australia

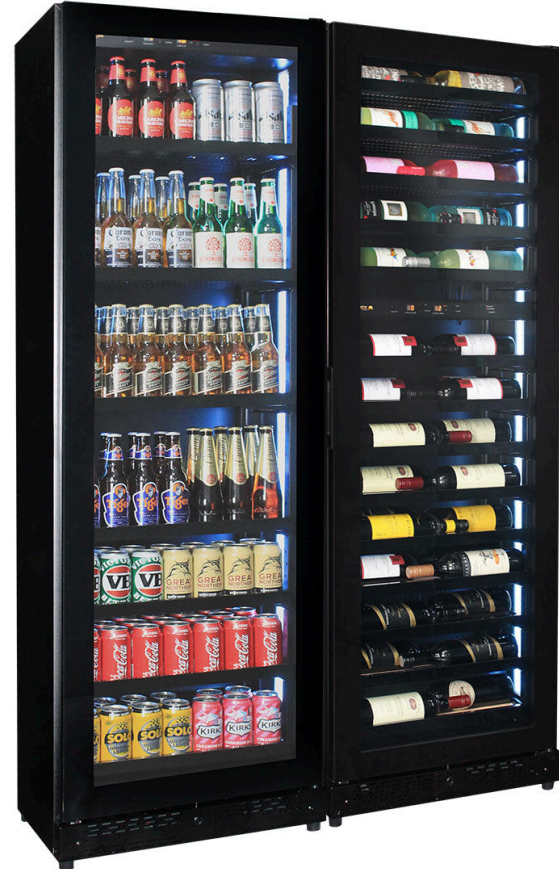
MODEL:
SK168-Combo3

QUICK INFO

Classy upright quiet running 3 zone beer and wine fridge combination designed especially with a shallow depth for areas where space is a premium. Unit is front venting and design to be free-standing OR built into a cavity, it comes with special brackets to attach to the wall for stability. Top zone 5-15°C and bottom zone 7-18°C, and beer zone 1-18°C.

It has the highest quality inverter driven EMBRACO brand compressor that is excellent for low energy usage when cooling and the 'dimable' 5 x LED light colour choices of white, red, orange, blue or green make a great feature.

**** Remember brackets come with unit to secure to wall - being so shallow it has small chance to topple if empty and opening door ****



PARTS AND ENERGY INFO

- Triple Glazing
- R600 100% ozone safe gas
- LOW E glass
- LED lighting
- Energy saving inverter compressor
- Cyclopentane foaming
- Comes Left Hinged (But Is Reversible)
- 12Volt Fans

SPECIFICATIONS

| | |
|-------------------------|-------------------|
| Capacity (litres) | 209 |
| Holds (cans) | 120 |
| Noise Level | 43.00 |
| Consumption | 2.6Kwh/24Hrs |
| Unit dimensions (WxDxH) | 1200 x 395 x 1820 |
| Lockable | Yes |
| Gross weight | 188 kg |



**Specifications and price of this product may change at any time
**For more information about this product please call us or visit our website.